



YOUR MONTHLY DOSE OF DESIGN

Brought to you by the minds behind SKETCHURE, it's where we share what's shaping our world: projects, details, and a little of everything in between.

THIS EDITION COVERS

- Design that speaks in shadows.
- Inspiration we're saving right now.
- Design that holds back, on purpose, at Badya.
- A moment with the team.

THE CREATIVE CORNER

This month, we draw from the past to shape the present.

In honor of the Islamic New Year, we're reflecting on one of many legacies from Islamic architecture: The Mashrabiya. A screen, a shade, a symbol of smart design, still inspires how we build, adapt, and connect today.

[Read more](#)



FROM DRAFTS TO CRAFTS

Project: Private Villa

Location: Badya, 6th of October



This home was all about letting the design breathe; clean lines, a neutral palette, and just the right amount of contrast. The client wanted a space that felt calm and uncluttered, without compromising on elegance.

We chose a design that stays quiet on purpose, letting materials, proportions, and natural light do the work.

The result: clarity, comfort, and nothing in the way.



Office Spaces

53 Pins · 2d



PINSPIRATION OF THE MONTH

Every design starts with a spark of inspiration!

Since office spaces have been evolving lately, we've been collecting the ones that truly redefine the experience.

Get inspired

TEAM TALK

Meet Nada, Sr. Architect & Interior Designer at SKETCHURE!
She's inspired by discipline, detail, and creative reflection.
She loves art, journaling, and her passion for fitness, and
brings clarity to every space she designs.



Nada Tarek
Sr. Architect & Interior Designer

What's something you're passionate about outside of design?

I'm very passionate about going to the gym. It's my way of recharging physically and mentally.

What's a creative outlet or activity you always come back to?

Journaling! It helps me clear my head and stay grounded. I write down everything from random thoughts to design ideas.

What's a book, movie, or piece of art that really stuck with you?

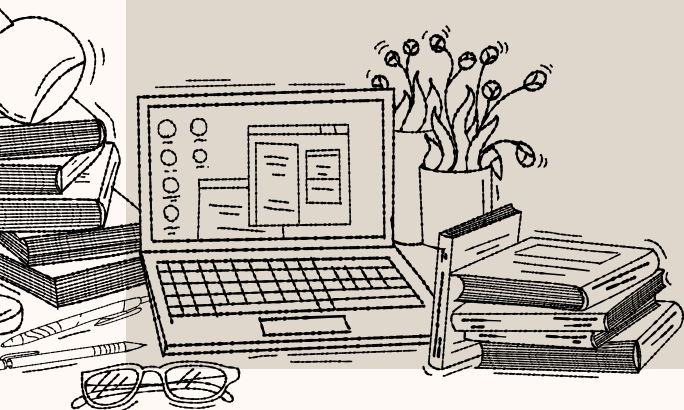
I like vintage rings and watches. The way small things can have so much story and style reminds me to pay attention to small details in design.

Has drawing or painting ever influenced the way you design?

I find a lot of inspiration in paintings, especially when it comes to color palettes. I love translating that feeling into interiors.

If your life were a color palette, what would it look like?

Warm neutrals like beige and off-white! But I'd also add a bold color like emerald green, just to show I like a little adventure.



More from our
Badya Project..



KEEP UP WITH SKETCHURE



info@sketchure.com
sketchure.com